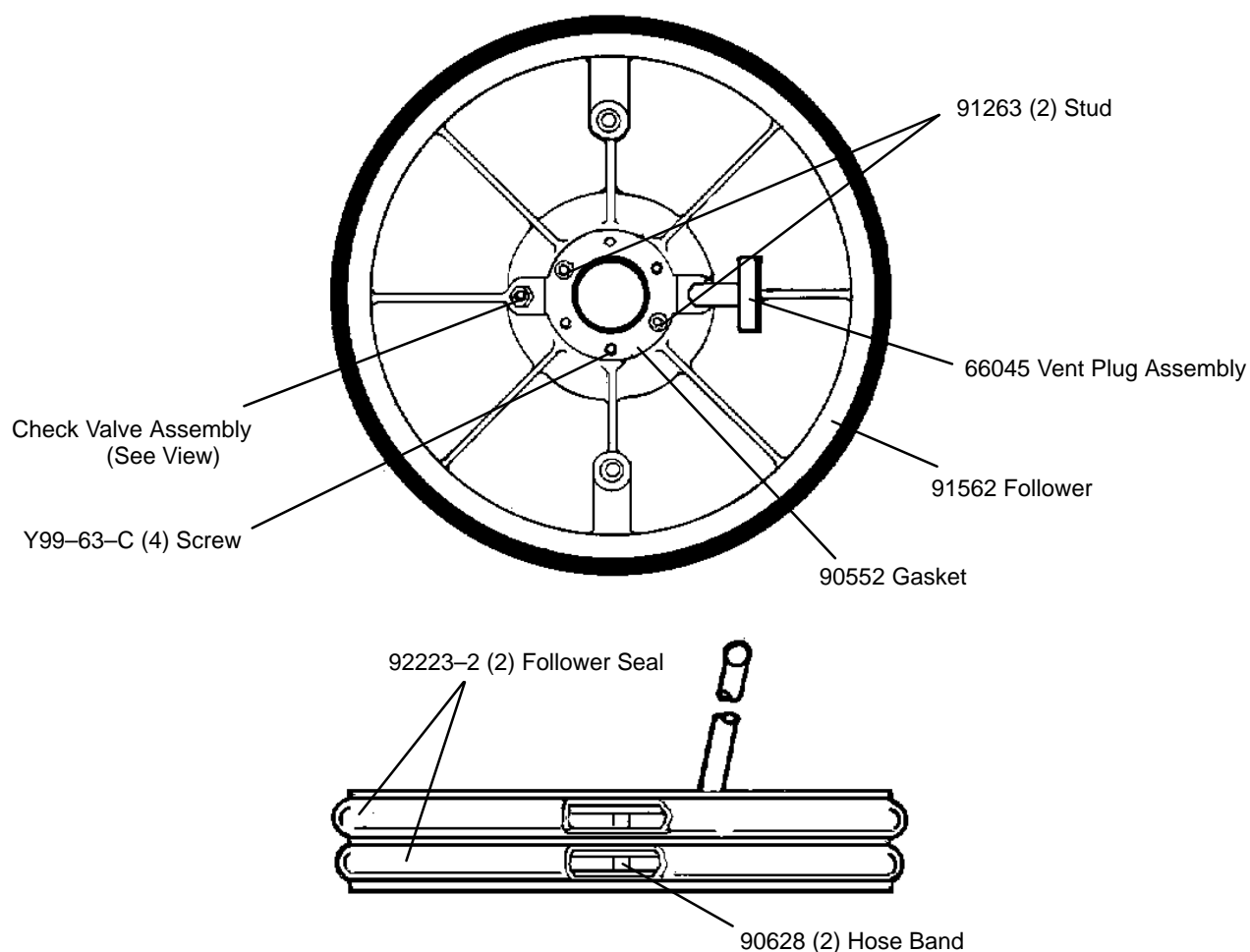
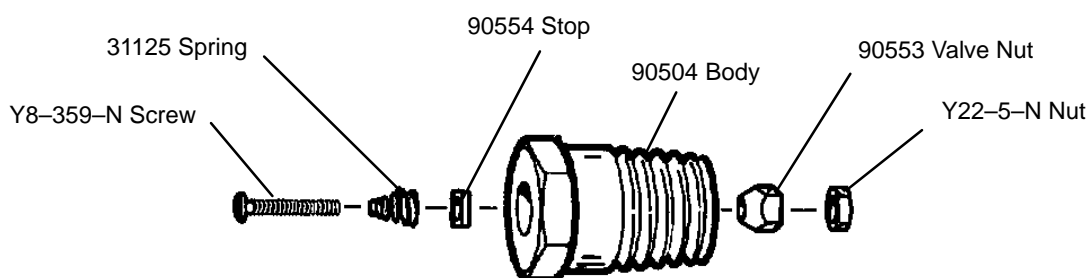


66083 FOLLOWER ASSEMBLY



65769 Check Valve Assembly



INSTRUCTION FOR REPLACING SEALS ON 66083 FOLLOWER ASSEMBLY

Spread apart old 92223-1 Seal at joint and use a chisel to cut old 90628 Hose Band. Remove old seal. Repeat procedure for second seal.

Grease groove on 91562 Follower. Oil 90628 Hose Band and then insert Hose Band inside of 92223-1 Seal, making two loops, each time passing the Hose Band through Band Lock Clip. Place 92223-1 Seal around groove in 91562 Follower and pull band tight. Insert excess of 90628 Hose Band through slot in end of Clamp Tool (77907). Insert Winder into Clamp Tool with the 90628 Hose Band inserted in the slot of the winder. Trim off excess band leaving approximately two inches

beyond the Winder. Fit Clamp Wrench over hex on Winder and turn Winder to tighten band. When band is tight, lock it by center punching Band Lock Clip three times. One of the punch marks must be centered on the clip. To do this, make a short slit in the seal, approximately 3 1/8 inches from center of Winder, and insert center punch. Remove Winder from Clamp Tool and cut 90628 Hose Band with tin snips close to seal joint. Insert excess band into 92223-1 Seal. Pound the seal with a rubber mallet around the circumference and at an angle of approximately 30 degrees to point of contact until seal ends are butted together. Repeat procedure for second groove and seal, but place seal so that butted seal end will be approximately 180 degrees from that of the other seal. Clamp Tool may be purchased from Aro (Part No. 77907).

